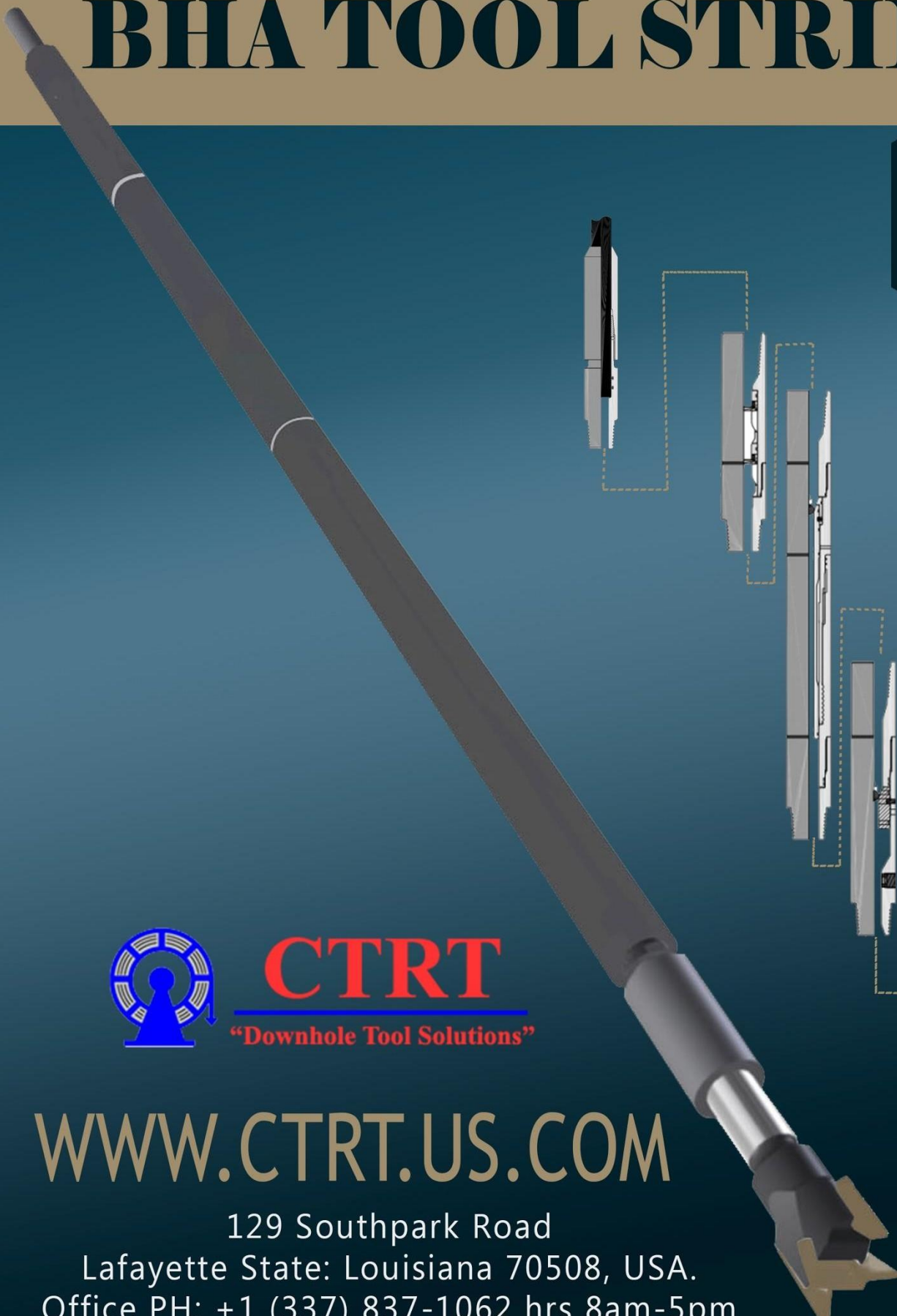


1.50"

BHA TOOL STRING

2024



CTRT

"Downhole Tool Solutions"

WWW.CTRT.US.COM

129 Southpark Road

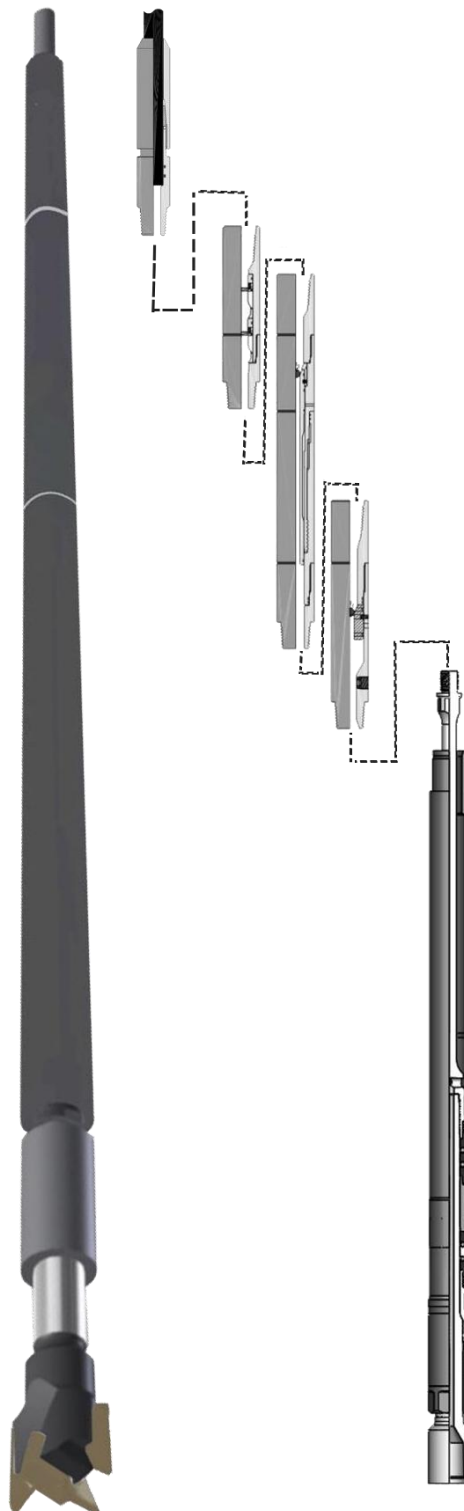
Lafayette State: Louisiana 70508, USA.

Office PH: +1 (337) 837-1062 hrs 8am-5pm



1.50" BHA Tool String

CTRT, Inc. complete 1.50" O.D. BHA tool string incorporates our design, functionality and capability the industry has demanded from us within our larger BHA tool product line. This small diameter tool line includes multiple options of internal coil connectors, dual flapper check valves, HD4 hydraulic disconnects, dual circulation subs and the SRT drill motor. If needed for a wash application, a fixed wash nozzle or bi-directional spinning wash tool can be utilized for a slim line wash assembly.



1.50"

INTERNAL COIL CONNECTORS

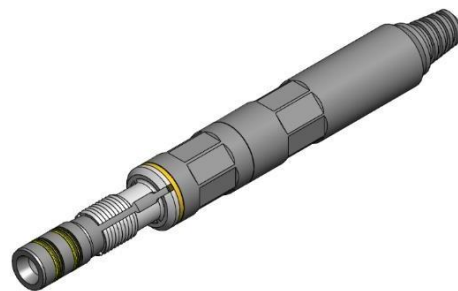
The **CTRT**, Inc. line of internal coil connectors for **1.50" BHA** have been designed for capabilities of handling higher tensile and torsional loads while providing efficient and reliable make-up to the coil tubing.

INTERNAL SLIP COIL CONNECTORS

The **Internal Slip type coil connector** engages the internal diameter of the coil tubing to ensure that axial load is transferred into the coil tubing.

Technical Specifications

Coil Tubing Diameter	1.50"
Coil Wall Thickness	.095" - .156"
Make-Up Length	12-7/8"
Max O.D.	1.50" SL & 1.68"
Min I.D.	.562
Thread Connection (*)	3/4" & 1.00" AMMT
Commodity Order No.	150ISC-XXX



INTERNAL DIMPLE COIL CONNECTORS

The **Internal Dimple type coil connectors** engages the coil by the forming of the coil tubing wall into the recess profiles of the one-piece coil connector.

Technical Specifications

Coiled Tubing Diameter	1.50"
Max O.D.	1.68"
Min I.D.	.750"
Coil Wall Thickness	.095" - .156"
Thread Connection (*)	1.00" AMMT
Make-up Length	3.25"
Commodity Order No.	150IDC168-XXX

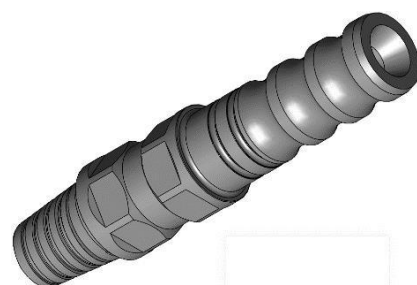


INTERNAL ROLL-ON CONNECTORS

The **Internal Roll-On type coil connector** engages the internal diameter of the coil tubing by crimping the exterior wall of the coil tubing via a crimping tool with rollers to form the coil to the mating shape of the coil connector.

Technical Specifications

Coiled Tubing Diameter	1.50"
Coil Wall Thickness	.095" - .156"
Max O.D.	1.50"
Min I.D.	0.531"
Thread Connection (*)	3/4" AMMT
Commodity Order No.	150-ROC-XXX



1.50"

DUAL FLAPPER CHECK VALVE

The **CTRT 1.50" Dual Flapper Check Valve** provides a means of preventing the back flow of well fluids into the coil tubing in the event of a failure or damage to the coil tubing string or surface equipment.

Technical Specifications

Tool O.D.	1.50"
Tool I.D.	.531"
Makeup Length	11.75"
Over-Pull Yield @ 80%	50,975 lbs
Torsional Yield @ 80%	2,745 Ft/lbs
Working Pressure	10,000 PSI
Thread Connection	3/4" AMMT

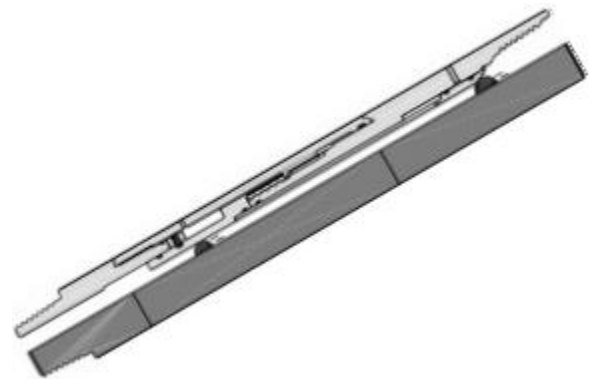


1.50" HD4 "INTER-LOC"™ HYDRAULIC DISCONNECT

The **CTRT 1.50" HD4 INTER-LOC Hydraulic Disconnect** has been designed to withstand high vibration, extreme torque and axial impact for today's long milling, drilling and impact hammer operations. The Inter-Loc and Rotational Lock technology features minimal components and a method for a clean disconnect while leaving only the GS profile housing for fishing operations.

Technical Specifications

O.D.	1.50"
Min I.D.	.344"
Makeup Length	16-1/2"
Tool Overpull Yield @ 80%	49,500
Fishneck Internal Profile	1.50" GS
GS Profile Overpull Yield @ 80%	50,000
Release Ball Options	7/16"
Drift Ball Options	5/16"
Working Pressure	10,000 PSI
Connection	3/4" AMMT

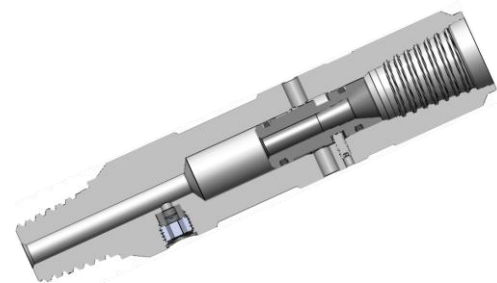


1.50" DUAL CIRCULATION SUB

The **CTRT 1.50" Dual Circulation Sub** is typically run above the motor to provide a circulation path to the annulus for increased flow rates during milling operations or if plugged along the drilling motor flow path. The design incorporates a single sub with no internal connections. A secondary rupture disc can be utilized as a means of bypassing fluid in the event a drop ball is not a option.

Technical Specifications

Tool O.D.	1.50"
Min I.D.	.281"
Drop Ball	5/16"
Makeup Length	6.000"
Over-Pull Yield @ 80%	56,000 lbs
Working Pressure	10,000 PSI
Connection	3/4" AMMT





1.50"

SRT Drill Motor

The **CTRTR** 1.50" SRT Downhole Thru-Tubing Drilling Motor incorporates our patented bearing assembly technology that converts hydraulic fluid energy, created by flow and pressure, into mechanical energy and improves operational performance. This unique small diameter motor with its associated BHA tool string is the only commercially available BHA in this size. For complete specifications, please see our full catalogue product brochure.





SRTX THRU TUBING DRILL MOTOR SPECIFICATION

Physical Data	Inches	MM	Axial Bearing Load Ratings		
Motor Overall Length	96.00	2,438		lbs	Kg
Motor Weight	51.0	23.1	Dynamic	1,600	726
Bearing Assy MU Length	26.5	673	Static	6,000	2,722
Top Connection	.75" AMMT	.75"	Compression/Tension	6,000	2,722
Bit Connection	.75" AMMT	.75"	Max Overpull to Re-Run	6,000	2,722
Bit Size	1-7/8"-	47.5-69.6	Max Bit Overpull (80%)	36,330	16,479
			Max Body Overpull (80%)	41,440	18,797

Note: Load ratings can vary with different bit styles based on aggressive to non-aggressive

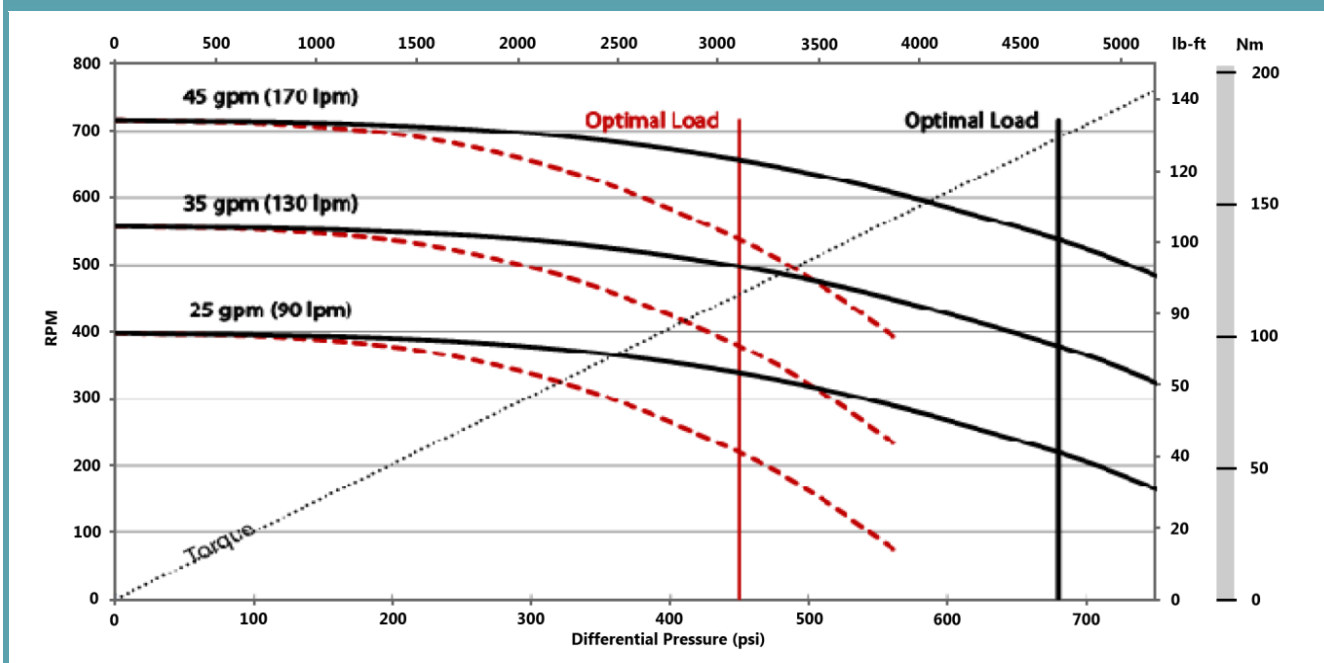
POWER SECTION SPECIFICATIONS

Rotor			Stator		
	Inches	MM		Inches	MM
Overall Length	64.0	1,626	Overall Length	64	1,626
Contour Length	51.0	1,295	Tube O.D.	1.50	38
Major Diameter	0.98	24.89	Tube I.D.	1.25	32
Minor Diameter	N/A	N/A	Rubber Cutback-Top	3.5	89
Eccentricity	0.07	1.78	Rubber Cutback-Bottom	6.8	173
Head O.D.	1.00	25	Stages	3.0	76
Weight-lbs (kg)	11	5	Weight-lbs (kg)	14	6
Thread Form	T1 or T2		Thread Form	Contact CTRT	

PERFORMANCE SUMMARY

Flow Range gpm (lpm)	25-45	95-170	Max Diff Pressure-psi (kPa)	700	4,826
Bit Speed Range (rpm)	400-720	400-720	Stall Diff Presssure-psi (kPa)	1,020	7,033
Torque Slope ft-lbs/psi	0.19	0.04	Max Torque ft-lbs (nm)	130	177
Rotation Rev/Gal (Rev/liter)	16.00	4.23	Stall Torque ft-lbs (nm)	190	258
Off Bottom Pressure-psi (kPa)	50	345	Max HP (kW)	18	14

PERFORMANCE CURVE





SRTX METAL/METAL THRU TUBING DRILL MOTOR SPECIFICATION

Physical Data	Metric	Imperial
Flow range	57-151 LPM	15-40 GPM
Max operating temperature	500 °C	932 °F
Revolutions per unit volume	3,99RPL	15,1 RPG
No load speed	226-604 RPM	
Maximum differential pressure	69 Bar	1000 PSI
Maximum torque	305 Nm	225 ft-lb
Motor Power	16 Kw	22 HP

Note: Performance data is for reference only and is subject to change.

ROTOR SPECIFICATIONS

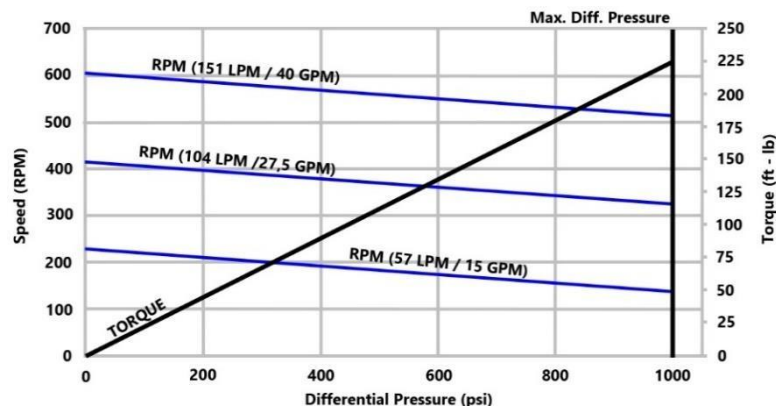
Physical Data	Metric	Imperial
Total length	1494 mm	58,8 in
Profile length	1344 mm	52,9 in
Head length	150 mm	5,9 in
Rotor eccentricity	1,2 mm	0,05 in
Major diameter	28,6 mm	1,13 in
Minor diameter	23,8 mm	0,94 in
Head diameter	27,0 mm	1,06 in
Material	34CrAlNi7-10 (1.8550)	
Weight	T.B.D	T.B.D

STATOR SPECIFICATIONS

Physical Data	Metric	Imperial
Total length	1750 mm	68,9 in
Profile length	1344 mm	52,9 in
Stator outer diameter	38,1 mm	1,50 in
Major diameter	31,0 mm	1,22 in
Minor diameter	26,2 mm	1,03 in
Material	34CrAlNi7-10 (1.8550)	
Weight	T.B.D	T.B.D

**Custom lengths and materials are available upon request.

PERFORMANCE CURVE





CONTACTS

Gilbert Donatti

International Market
Cell: +1 (832) 681-0091
Email: gilbert@ctr.us.com

Carl LeBlanc

North America / International Market
Cell: +1 (337) 278-7786
Email: carl@ctr.us.com

Cathy Frantz

Corporate Office
Office PH: +1 (337) 837-1062
Email: ctrtooffice@ctr.us.com

Office PH

+1 (337) 837-1062
Email: sales@ctr.us.com
WWW.CTT.US.COM